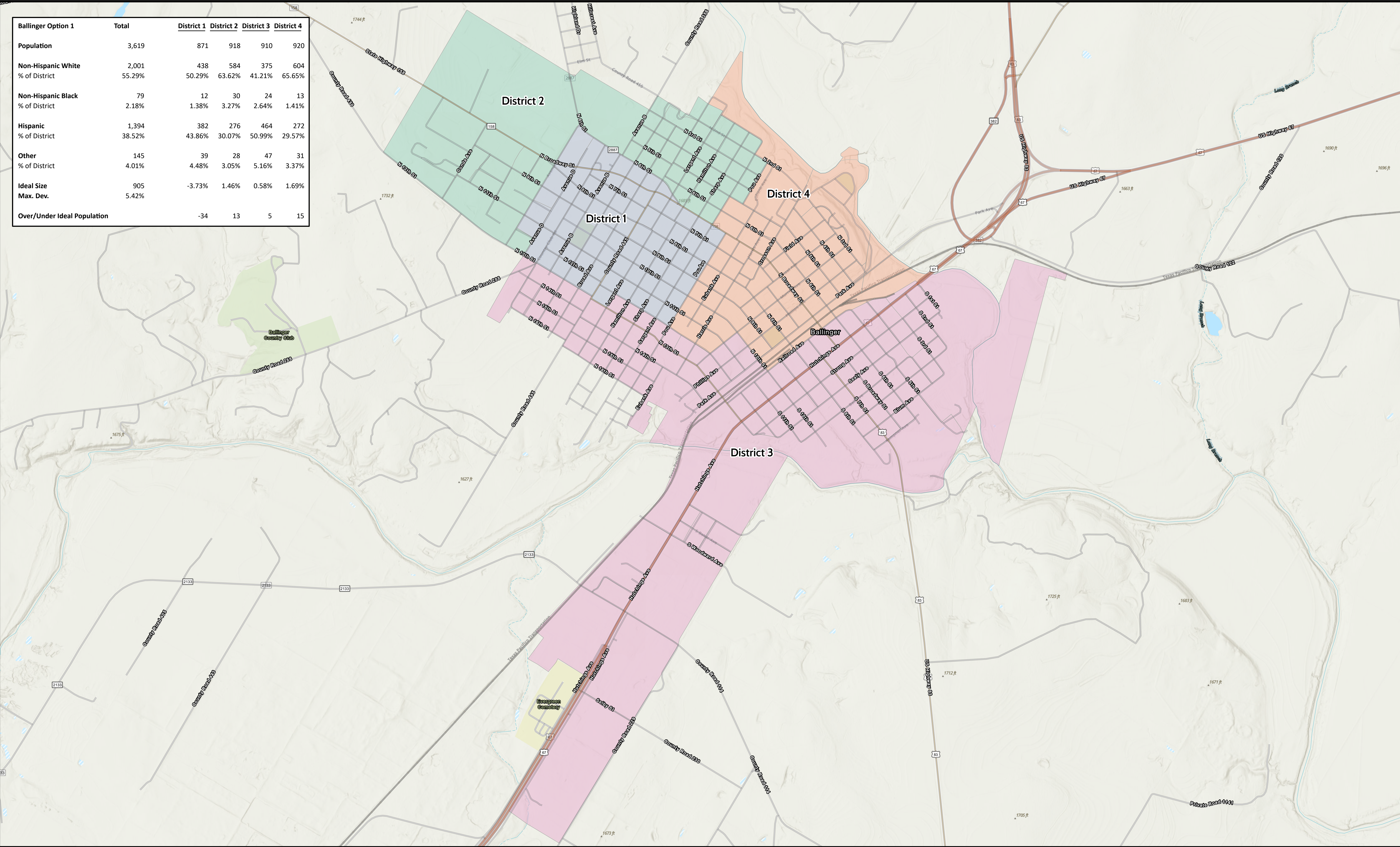


Ballinger Option 1	Total	District 1	District 2	District 3	District 4
<b>Population</b>	3,619	871	918	910	920
<b>Non-Hispanic White</b>	2,001	438	584	375	604
% of District	55.29%	50.29%	63.62%	41.21%	65.65%
<b>Non-Hispanic Black</b>	79	12	30	24	13
% of District	2.18%	1.38%	3.27%	2.64%	1.41%
<b>Hispanic</b>	1,394	382	276	464	272
% of District	38.52%	43.86%	30.07%	50.99%	29.57%
<b>Other</b>	145	39	28	47	31
% of District	4.01%	4.48%	3.05%	5.16%	3.37%
<b>Ideal Size</b>	905	-3.73%	1.46%	0.58%	1.69%
<b>Max. Dev.</b>	5.42%				
<b>Over/Under Ideal Population</b>		-34	13	5	15



# City of Ballinger, TX

Date: 9/13/2023 Data Sourced from TNRIS, Census

- New District No.
- 1
  - 2
  - 3
  - 4



Doucet & Associates has generated this exhibit for informational purposes only. Data has been compiled from various sources and should not be assumed to be a legal description and should not be a substitute for an on-ground survey. Data is believed to be accurate, but accuracy is not guaranteed. While D&A has attempted to ensure that the information contained in these data layers is accurate, D&A expressly disclaims all warranties of any type, expressed or implied. D&A assumes no liability for any errors, omissions, or inaccuracies in the information provided regardless of the cause of such or for any decision made, action taken, or action not taken by the user in reliance upon any data provided herein.